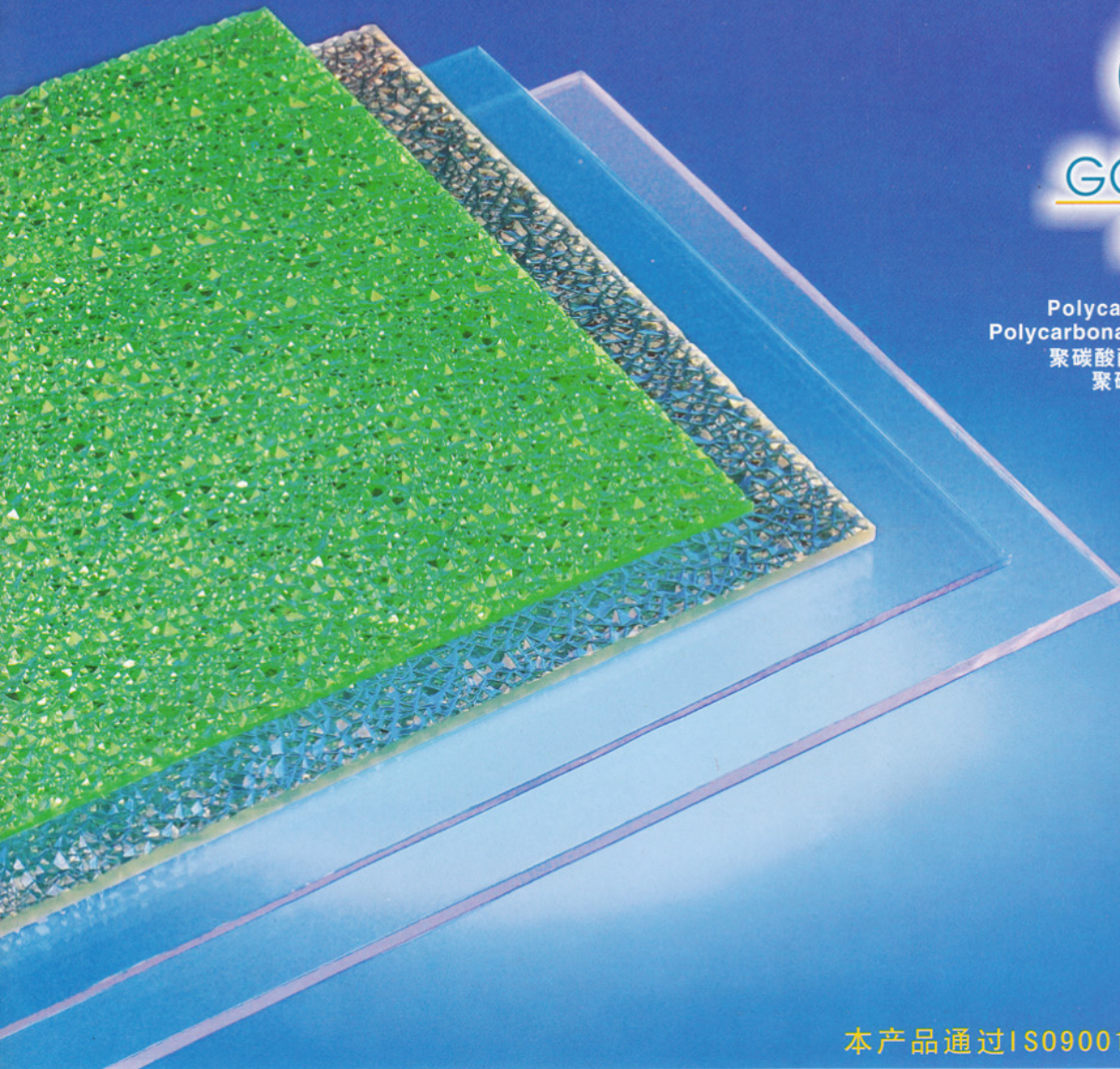


# POLYCARBONATE SOLID SHEET

中外合资·固莱尔阳光板



Polycarbonate solid sheet  
Polycarbonate embossed solid sheet  
聚碳酸酯实心板(耐力板)系列  
聚碳酸酯颗粒板系列



本产品通过ISO9001:2000质量体系认证



Thanasangchai Stainless Co., Ltd.  
<http://www.thanasang.com>  
Tel. 02-997-6175, 02-997-6181 Contact: Khun Piya

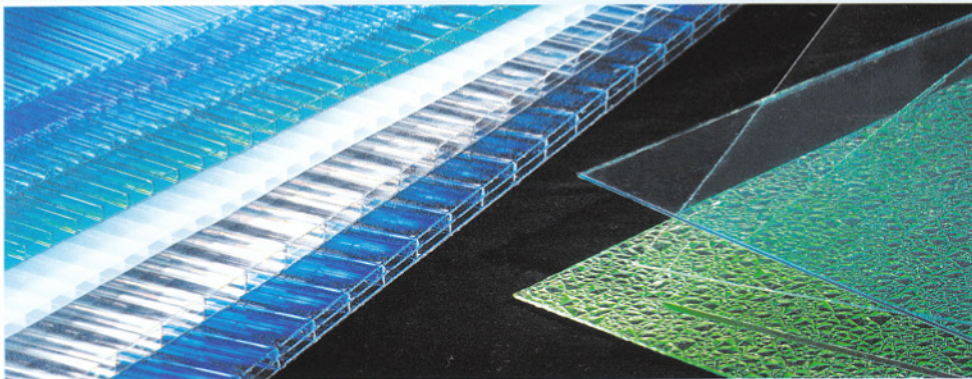


**G ADVANTAGE(优点):**

- \* Omipa UV-PC coextrusion line:  
2 lines for hollow profile  
1 line for solid sheet
- \* Makrolon PC resin from Bayer.
- \* 10,000 tons annual output.
- \* ISO9001:2000 proved.
- \* Specialize manufacturing PC sheet
- \* Ten years warranty
- \* One side/ both side UV treatment available



- \* 使用 OMIPA UV-PC 共挤生产线
- \* 使用德国 Bayer 公司 PC 原料
- \* 年产量10,000吨
- \* SGS机构 ISO9001:2000 认证
- \* 专业生产聚碳酸酯板材
- \* 十年质量保证
- \* 可选用单面UV或双面UV共挤板材



**G APPLICATION(用途):**

- \* Sky light system;
- \* Roof light for office buildings, department stores,hot-els, villas, stadiums,schools, amusement centers,ho-spital etc;
- \* Sound absorbtion wall for freeways, high-speed railw-ay and MRTs;
- \* Indoors swimming pools, sun bath pools,greenhouse roofs and sidings;
- \* Subway exits, parking lots, garage tents, bus-stops, terminals, shopping arcades, large stadium and rain tents, pagodas,hallway tents;
- \* Robbery counters in banks, jewelry counters and poli-ce blast shields;
- \* Safety roof light for airports and plants;
- \* Sign boards for advertisement;
- \* Housing glasses, indoor partitions, sidewalk, sight wi-ndows, sunshade, terraces and shower doors;

- \* 采光系统。
- \* 办公大楼、百货大楼、宾馆、别墅、学校、医院、体育场、娱乐中心及公用设施的采光顶棚。
- \* 高速公路、轻便铁路及城市高架路隔音屏障。
- \* 现代植物温室及室内泳池的天幕。
- \* 地铁出入口、车站、停车场、商场、凉亭、休息厅、走廊的雨棚。
- \* 银行防盗柜台、珠宝店防盗橱窗、警用防暴盾牌。
- \* 飞机场、工厂的安全采光材料。
- \* 广告灯箱的面板、广告展示牌。
- \* 家居、办公室的室内间隔，人行通道，护栏、阳台、淋浴房的拉门。



# G POLYCARBONATE SOLID SHEET • EMBOSSED SHEET

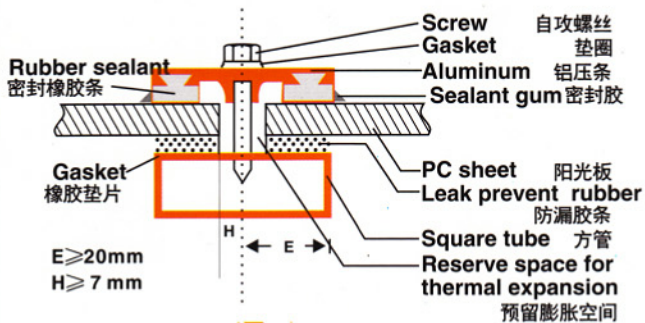
## Super weather resistant solid sheet (SD-1)(SD-2)

- Material is UV treated. A special UV layer is coextruded on the surface for super weather durable result.
- SD-1: UV layer on one side.
- SD-2: UV layer on both side.
- Eliminate 98% of ultra violet radiate.
- Used as sound absorption wall of high way, public service and some project that have special requirement.

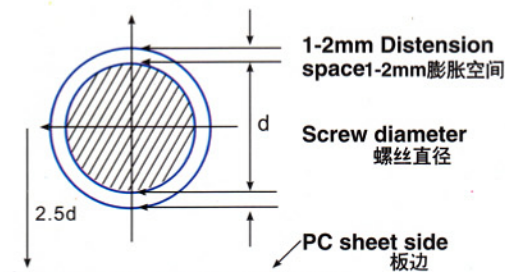
## 超耐候型实心板 (SD-1) (SD-2)

- 基材经UV处理,表面共挤UV层
- SD-1:单面共挤UV层
- SD-2:双面共挤UV层
- 单面/双面共挤压UV深层,能吸收消除98%有害人体的紫外线。
- 冷作弯曲性能良好,隔音系数高,耐寒、耐热性强,电绝缘性佳,成型及热加工性能优秀。
- 透光率高达92%。
- 适用于高速公路隔音屏障,公用设施等有特殊要求的工程。

## INSTALLATION(安装):



(图一)



(图二)

△ Consider the thermal expansion due to seasonal temperature fluctuation, the aperture should be 50% larger than the diameter of the screw.



透明平板(Clear solid sheet)



蓝色平板(Blue solid sheet)



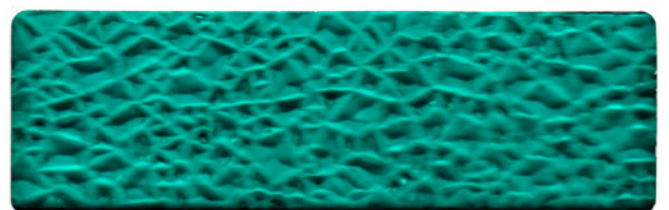
绿色平板(Green solid sheet)



乳白平板(Opal solid sheet)



茶色平板(Bronze solid sheet)



绿色颗粒板(Green embossed sheet)

注: 此色样可能与实际略有差异

note: there will be a little difference between samples and that of practical delivery in color.

## FEATURES OF PC SHEET (特性):

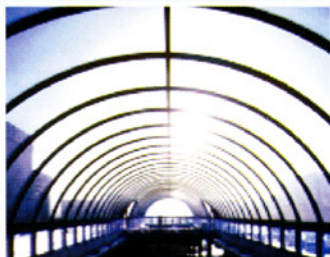
Transparency	透光性
UV-Protection	防紫外线
Light Weight	重量轻
Impact Strength	抗冲击性
Inhibiting Condensation	不易结露
Thermal Insulation	隔热
Sound Insulation	隔音
Flame Resistance	难燃性
Easy Installation	加工性好
Environmental Friendly	无污染产品



## TECHNICAL DATA (技术指标):

Characteristics (性能)	Unit (单位)	Polycarbonate solid sheet (PC实心板)	Polycarbonate embossed solid sheet PC颗粒板
Impact Strength (冲击强度)	J	50	35
Light Transmission (透光率)	%	88-92	60-70
Specific Gravity (比重)	g/cm <sup>3</sup>	1.2	1.2
Coefficient of Thermal Expansion (热膨胀系数)	mm/m°C	0.065	0.065
Service Temperature (可耐温度)	°C	-40°C~+120°C	-40°C~+120°C
Heat Conductivity (传热系数)	W/m <sup>2</sup> °C	0.21	0.21
Tensile Strength* (抗拉强度)*	N/mm	≥60	≥60
Flexural Strength* (弯曲强度)*	N/mm <sup>2</sup>	100	100
Modulus of Elasticity* (弹性模量)*	Mpa	2400	2400
Tensile Stress at Break* (断裂拉伸应力)*	Mpa	≥65	
Elongation at Break* (断裂拉伸率)*	%	>100	
Effect of Sound proof (隔音效果)		35 decibel decrease for 6mm solid sheet 6mm实心板减少35分贝	28 decibel decrease for 3mm embossed solid sheet 3mm颗粒板减少28分贝

\*TEST ON MATERIAL 材料检验结果



## PRODUCT LIST (产品列表):

Poly carbonate weather resistant solid sheet	耐候型PC实心板
Poly carbonate super weather resistant solid sheet	超耐候型PC实心板
Poly carbonate weather resistant embossed solid sheet	耐候型PC颗粒板

Max width: 2100mm	最大宽度2100mm
Length: No limit	长度无限制
thickness range: 1.5-12mm	厚度范围1.5-12mm

	Thickness (mm) 厚度	Weight (kg/m <sup>2</sup> ) 重量	Min Curving Radius(mm) 最小弯曲半径	Min Span Accordingly (mm) 对应最小跨度
Polycarbonate solid sheet 实心板耐力板	1.5	1.8	270	540
	2	2.4	360	720
	3	3.6	540	1080
	4.5	5.4	810	1620
	6	7.2	1080	2160
	10	12	1800	3600
Polycarbonate embossed solid sheet 颗粒板	3	2.9	600	1200
	4	4.1	800	1600
	5	5.3	1000	2000





透明平板(Clear solid sheet)



蓝色平板(Blue solid sheet)



绿色平板(Green solid sheet)



乳白平板(Opal solid sheet)



茶色平板(Bronze solid sheet)



绿色颗粒板(Green embossed sheet)

### Weather resistant solid sheet (GLS)

- Widely used as interior decoration ,upholster of commercial ,industrial ,residential buildings.
- Safety barrier
- With glazed surface
- Can be bent while hot /cold.
- Easy for installing.
- With equably color distribution
- Material is UV treated for long life application

### 耐候型PC实心板 (GLS)

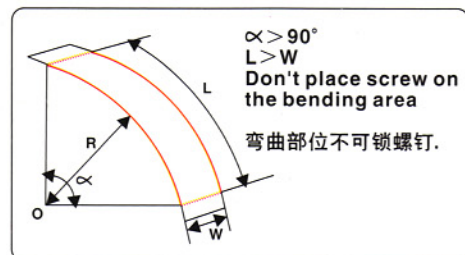
- 本板材用途广泛,适用商业、工业、室内装潢、建筑外观等范围.
- 表面晶莹、平滑、冷、热加工弯曲均可.
- 色泽均匀,稳定、遮光,断热性良好.
- 材质稳定,使用年限久,寿命长.

### Weather resistant embossed solid sheet (GLE).

- Widely used as interior decoration ,upholster of commercial ,industrial ,residential buildings.
- With 15000-18000 diamond concavity in every sqm on the surface.
- Enhance the reflection of direct irradiation so that the light transmission will be lessen
- With more surface area to absorb or to emit the heat
- Material is UV treated for long life application

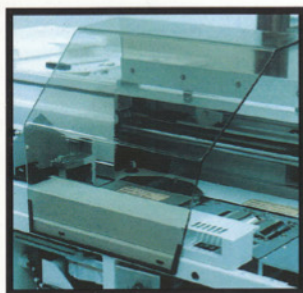
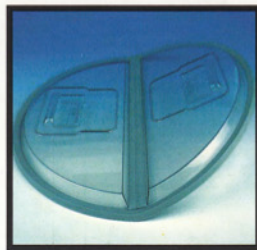
### 耐候型PC颗粒板 (GLE)

- GLE板材表面可反射强光对板材的直接照射,经此处理之后可降低阳光穿透率.
- GLE板材表面可增加表面积,可吸收因日照而形成的热能,同时增加了散热性,可延长板材使用寿命.
- GLE板材表面每平方米分布15000—18000颗反钻石型的颗粒,反射、折射效果可增强遮断性.
- GLE板材造型优美亮丽,适合各种设计,并维持一定透光.



注: 此色样可能与实际略有差异

note: there will be a little difference between samples and that of practical delivery in color.



ISO9001:2000

### To customers and readers:

This information and our technical advice whether verbal, in writing or by way of trails are given in good faith but without warranty, and this also applies where proprietary rights of third parties are involved. Our advice does not release you from the obligation to check its validity and to test our products as to their suitability for the intended processes and uses. The application, use and processing of our products and the products manufactured by you on the basis of our technical advice are beyond our control and, therefore, entirely your own responsibility. Our products are sold in accordance with the current version of our General Conditions of Sale and Delivery.

### 致客户及其它读者:

本公司在口头、书面及试验上的技术意见均出于诚意，但不承担保证，对第三者所有权亦然。贵方有权对我方供应产品作试验，确定是否适合所需的用途。因我方无法监控产品之应用、使用和加工，及贵方依据我方技术意见所生产之产品，故有关责任全由贵方承担。我方销售的产品为符合我方普遍销货及交货条件范围内所列品质的产品。



Thanasangchai Stainless Co., Ltd.  
<http://www.thanasang.com>  
Tel. 02-997-6175, 02-997-6181 Contact: Khun Piya